

Playbill

Montford Park
Players
51st Season



Twelfth Night

*Adapted & Directed by
Fable Wilde Day*

M&M THE MATT & MOLLY TEAM
ESTABLISHED 2011 Moving the Mountains

KW KELLER WILLIAMS REALTY

June 23-July 22, Friday-Sunday at 7:30pm, Hazel Robinson Amphitheatre, 92 Gay Street, Asheville, NC



North
Carolina
Arts
Council



This project receives support from the North Carolina Arts Council, a division of the Dept of Cultural Resources, with funding from the National Endowment for the Arts, through the Asheville Area Arts Council



We may not
always
know the
classics of
theater but
we **SURE**
do know
how to sell
houses!



THE MATT &
MOLLY TEAM



828.210.1697 | TheMattAndMollyTeam.com

THE MONTFORD PARK PLAYERS PRESENTS

TWELFTH NIGHT

By William Shakespeare

Adapted and Directed by

Fable Wilde Day

SPECIAL NOTE:

Our new platform has been delayed by construction issues, and may not be completely finished by opening night.



CAST

Audrey Savitt – Viola

Devyn Ray – Olivia

Aaron Ybarra – Orsino

Emily Dake – Sebastienne

Eric Vik – Malvolio

Dwight Chiles – Toby Belch

Patrick Nguyen – Andrew

Aguecheek

Blaine Weiss – Maria

Spike Thompson – Feste

Lucien Hinton – Antonio

Adam Kelley – Curio/Guard

Quinn Terry – Valentine/

Priest

PRODUCTION STAFF

Fable Wilde Day – Directress

Naimah Coleman – Stage Manager

Gabrielle Tee – Music Director

Devyn Ray – Intimacy Choreographer

Kristi DeVille – Dance Choreographer

Deanna Braine Smith – Fight Choreographer

Dwight Chiles – Set Designer

Ida Bostain – Costume Designer

Katy Hudson – Lighting Designer

Casey Clennon – Sound Designer

TO OUR PATRONS

To Our Patrons

- Thank you for joining us this evening. We hope you enjoy our production of ***Twelfth Night***, as presented by The Montford Park Players, North Carolina's longest running Shakespeare Festival. We're glad to welcome you to our **51st Season**, and we're delighted to have you back!
- We're very grateful to **The Matt & Molly Team** for sponsoring ***Twelfth Night!*** We highly recommend them for all your real estate needs!
- There will be one twenty-minute intermission. Concessions will be available at the entrance to the amphitheatre. Many thanks to **The Matt & Molly Team** for also sponsoring Shakespeare's Tavern, where you will find a delightful selection of wines and local beers on tap.
- We are pleased to accept all major credit/debit cards, cash, checks, PayPal.me and Venmo (@MontfordParkPlayers) for your donations and concessions. Our actors will walk through the audience with buckets if you'd like to donate by cash, check, PayPal or Venmo, and all payment forms are welcome at Shakespeare's Tavern.
- Please turn the volume off on all cell phones and pagers to avoid distracting your fellow audience members.
- Flash photography is not permitted in the theatre.
- The Montford Park Players is going GREEN! Please help us conserve the environment by depositing your empty cans in the marked recycle bins.
- Please feel free to contact us with any questions or comments by phone at (828) 254-5146, email at info@montfordparkplayers.org, or snail mail at Montford Park Players, PO Box 2663, Asheville NC 28802-2663. You can also follow us on Facebook (MontfordParkPlayers) or on Twitter (MontfordPlayers) or on Instagram (#montfordparkplayers)

WELCOME FROM THE EXECUTIVE DIRECTOR



On behalf of the board of directors and the members of The Montford Park Players, I want to personally welcome YOU to our 51st season of free theatre!

We're pleased to tell you that ALL our shows are free-of-charge – all season long! We at MPP envision a world in which everyone can experience exceptional live theatre, regardless of the ability to pay. Therefore, all of our shows are donation only. "Pay what we're worth." "Pay what you can." Some may even call it crazy. Call it what you will – and enjoy the show!

Here's our summer 2023 schedule – all shows will run for five weeks, except for Alice (4 weeks):

- 5/26/2023 6/17/2023 Wendy & Peter (a Peter Pan story) by Skyler Goff - a world premiere
- 6/23/2023 7/22/2023 Twelfth Night
- 7/28/2023 8/26/2023 Treasure Island by Honor Moor- a world premiere
- 9/1/2023 9/30/2023 The Tempest
- 10/6/2023 10/28/2023 Wonderland Legacies: Alice's Adventures in Murderland by Will Storrs – a world premiere and our Halloween show!

This will be a 24 week season with 67 scheduled performances
All performances Friday – Sunday at 7:30 pm, except where noted.

Here's a glimpse of what's on the horizon for MPP:

- We're expanding our lower stage - we're making it bigger and taller, so you can more easily see and hear our actors!
- We've completed repaving our back driveway to 100 Jersey St. For our visitors with mobility issues, this is a perfect place to park for easiest access to the theatre seating. We plan to continue raising funds for more renovations, and we appreciate your support!

Making the most of your visit:

We want you to fully enjoy your experience with us. Feel free to bring a picnic and your favorite beverage, or purchase wine, sodas, local beers and snacks at our concession cart. Four-legged friends are always welcome and will receive a free treat at our concessions stand!

We are so grateful to our current donors, sponsors, and advertisers and YOU, our faithful audience, without whom we could not exist. Now sit back, relax, and be ready to laugh, cry, and be entertained as the curtain rises on another great production by the Montford Park Players.

John Russell
Executive Director



**MONTFORD PARK
PLAYERS**

TWELFTH NIGHT WORD SEARCH

I Z O D G E L X S E V O L T C S X
T G I L I U J S H T A X U Q D M U
U O N I I F R T A W M Y I R Y L Q
N M O E C P T O K E R S O U H V I
F A T S B K Z C E E E W D D G M N
T L N Y O W A K S C S W X L A N Q
R O A B W O D I P K H H S L H B S
U I W I O M E N E E S W V D O K N
S V R E Z A K G A W W O U J M A G
T A Z P J N U S R M L K O A I A P
W I L B Q I D R E I N I T T I E V
O V L Y G G F P O E R H S R T Y Z
R I Q Y L U B H U A O A Y S O K F
T L B R U U R P S J B L E I A C N
H O A G T Q R E N E L F B D O T A
Y O T S D N C T S I N T M W M N M
Z Q G A O R S I N O U I C O W T V

Antonio

Illyria

man

shakespeare

trustworthy

Cesario

lies

Olivia

stockings

Viola

duke

Love

Orsino

swords

woman

Feste

Malvolio

Sebastian

truly

MEET THE CAST & CREW



Dwight Chiles (Toby Belch/Set Designer)- Dwight is excited about jumping back on the Montford Stage! They are an Actor, Director, Designer who works at many companies in WNC including HART, SART, Parkway Playhouse, NC Stage and more. Favorite MPP credits include *Much Ado* 2022 (Director); *Macbeth/Pericles* (Macbeth/Ensemble); *Taming of the Shrew* (Director); *Christmas Carol* (Director). Dwight will also be directing this seasons *Tempest* set to hit the stage in September. If you aren't tired of them by that point come see them at the Magnetic Theatre in *Splatter Play* in October and directing *New Queers Eve* in November! Thanks for seeing the show!!!



Blaine Weiss (Maria)- is excited to be back for her 3rd

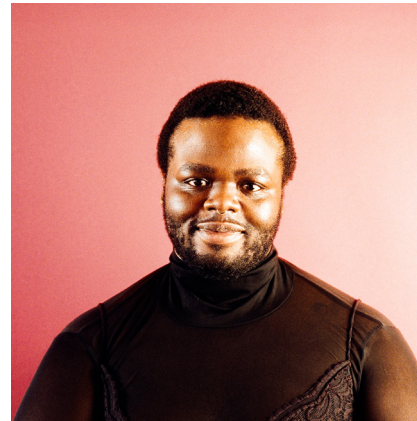
summer in a row with MPP. She was most recently seen in an original production of *Recycled Nuts* (Alma/ Effie) produced in partnership with Multiverse Theatre Collective and Haywood Arts Regional Theatre and in *The Haunting of Hill House* (Theodora) with Hendersonville Theatre. Catch her back on the MPP stage this September in *The Tempest* (Trinculo). She's grateful for your support of local theatre.



Audrey Savitt (Viola) - Audrey (she/her) is excited to be making her Montford debut after an 11-year hiatus from performing. In a bit of coincidence she will be leaping into the character of Viola, the same role she played before departing the stage a decade ago. She is so grateful to everyone involved for such a wonderful experience. She would like to give a shout out to her little one for allowing dad to be in charge of bedtime during the rehearsal process. Some previous roles include Viola and Sebastian in *Twelfth Night*, Quince in *A Midsummer Night's Dream*, and Miss Caroline Bingley in *Pride and Prejudice*.



Lucien Hinton (Antonio) - Lucien is delighted to be making his Asheville debut after far too long a break from theatrical performance. He performed with the band The Merry Wives of Windsor for 6 years, and has performed in such shows as *Guys and Dolls*, *Wizard of Oz*, *The Secret Garden*, and yes, *Twelfth Night*, along with many others. He is overwhelmed with the opportunity to perform with such a wonderful cast in a show touching on such personally important themes. "It is revolutionary for any trans person to choose to be seen and visible in a world that tells us we should not exist." -Laverne Cox



Spike Thompson (Feste)- Spike, a multidisciplinary artist based in so-called asheville (unceded cherokee land) is feeling full of love, excitement, and anticipation for her debut at Montford Park Players.

Currently serving on the Board of Directors at the theatre; existing in multitudes within this beautiful community is finding itself to be quite fruitful. Growing up in Florida, Spike allowed themselves to be a vessel and the stage a vast body of water. Steering away offshore for a while at the start of Covid-19, settling back into this multiverse of the theatre world was a bit challenging at first. Starting the year with Bright Star over at Asheville Community Theatre and now Shakespeare the world is feeling like an oyster that Spike is excited to crack open!



Quinn Terry (Valentine/Priest)- Quinn (he/they) is thrilled to be in this production - his first here at Montford! You may have seen them earlier this year in *Happyland* as Rhonda (Cast B) at the Magnetic Theatre. Upcoming productions he's fortunate to be a part of are *The Tempest* as Prince Ferdinand here at Montford and a queer cultist in Magnetic's December production of *New Queer's Eve*. Many thanks to their spouse, Luke, for listening stoically to hours of recorder practice.

Givens

GERBER
PARK

An option you didn't know you had.
Senior living at a more affordable price.
Fees are all-inclusive based on income.



WORTHY OF THE SPOTLIGHT

828.771.2207 | info@givensgerberpark.org

www.givensgerberpark.org | [@givensgerberpark](https://www.instagram.com/givensgerberpark)

Don't miss your cue: call us today

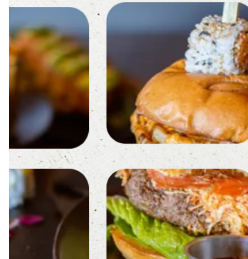


THE MADNESS

Sushi, Burger & Bar

1020 Merrimon Ave Asheville, NC 28804

828-505-1345



Extra parking next-door at HCANA
After 4pm M-F
All day Saturday and Sunday

DRIVE RECOGNITION FOR THE ARTS

Show your support for
North Carolina's arts everywhere you
go with an Arts NC license plate.



www.thecreativestate.org

MEET THE CAST & CREW



Aaron Ybarra (Orsino)- Aaron is ever so grateful to return to the Montford Park Players' stage, where he most recently played Horatio in *Hamlet*. He also has played Dr. Rank with Tryon's Shakespeare & Friends' *A Doll's House* and Roger in Different Strokes' *Mixed Fandango*. He has also worked on music and movement with various companies in the area.



Eric Vik (Malvolio)- Some of Eric's recent Asheville credits include Cymbeline in *Cymbeline* (Nemesis Theatre Co), Kinmar in *Santa Claus Conquers the Martians* (Attic Salt) and Polonius in *Hamlet* (Montford Park Players). Eric trained in acting with Berg Studios in Los Angeles and classical acting with The London Academy of Music and Dance (LAMDA). Eric met his lovely wife Lauren performing in plays in Austin, Texas.



Adam Kelley (Curio/Guard)- After over a decade away from the stage, Adam is happy to be making his debut with the Montford Park Players this season. He last appeared in *Richard III*, *MacBeth*, and *Coriolanus* with the Atlanta Shakespeare Company. Favorite past roles include Prior in *Angels in America: Millennium Approaches*, Anthony in *The House of Yes*, and George Gibbs in the StageWorks Theatre Company production of *Our Town*. A very special thank you to Kyle for his love and support-- #MAJK



Devyn Ray (Olivia/Scenic Painter/Intimacy Choreographer)- former Associate Artistic Director of the Montford Park Players, is originally from Austin, TX where she studied Theatre Performance and movement at St. Edward's

University. In Asheville, she has been seen as Stella Kowalski in *A Streetcar Named Desire*, Lady Anne in *Richard III*, Essie in David Hopes's *Washington Place*, Beatrice in *Much Ado About Nothing*, Charlotte in *Pride and Prejudice*, Cassius in *Julius Caesar*, Portia in *The Merchant of Venice*, Emilia in *Othello*, Dani in *The Man From Earth*, Dawn Wilson in *Lobby Hero*, Queen Elizabeth in *Shakespeare in Love*, Autolycus in Travis Lowe's *16 Years Tried* and most recently Porthos in *The Three Musketeers*. She has worked as a designer and sometimes teacher for The Magnetic Theatre, Montford Park Players and Parkway Playhouse. Her art has also been featured in the Foundation Studios gallery in the River Arts District, as well as murals in Hendersonville and many several local drag shows, tattoo shops and homes around Asheville.



Emily Dake (Sebastienne)- Emily Dake is a vocalist, actor, and crafts-woman based in Asheville, NC. She has performed as a soprano with the Choral Society of Durham, Asheville Choral Society, and Tempus, and as a country music background vocalist. Favorite theater roles have included Millie in *Thoroughly Modern Millie*, Meredith in

Bat Boy, Rosa Bud in *The Mystery of Edwin Drood*, Mina Harker in *Dracula* (Dietz), Marian Paroo in *The Music Man*, and Alice Hemmings in *The Book of Will*.



Patrick Nguyen (Andrew Aguecheek)-Patrick is very excited to return to the Montford Park Players stage! This is Patrick's third year with Montford in which he was previously seen with them last summer in *Much Ado About Nothing* playing the role of Claudio. He was also in their production of *Macbeth*, *Pericles*, and *Living Dead in Denmark*! Patrick is currently a student at UNC-G entering his sophomore year majoring in Theatre and Arts Administration with a minor in new media and graphic design. Patrick also was seen in Greensboro with Goodly Frame Theater in *Much Ado About Nothing* playing the role of Benedick. Patrick's other Shakespeare credits include *A Midsummer Night's Dream* playing Nick Bottom and *Pericles: Prince of Tyre* playing Pericles. He is very excited to be in this fun and different take on *Twelfth Night* led by Fable's direction with a great group of actors. Hope you enjoy the show!

SCENE SYNOPSIS

Act 1 Scene 1- Feste sings a song of longing for a lost love and Captain Orsino talks to his first mate, Curio about his love for Captain Olivia

Act 1 Scene 2- Viola and Valentine wash ashore from a shipwreck, tell us about this land called Illyria, mourn the loss of Viola's twin sister, and hatch a plan to disguise Viola as Ceasario.

Act 1 Scene 3- Toby Belch, Captain Olivia's cousin, introduces his boyfriend, Andrew, to his girlfriend, Maria, and begins his plan to marry Andrew to Olivia as a beard

Act 1 Scene 4- Captain Orsino asks "Caesario" to woo Captain Olivia for him. Viola may or may not have a crush.

Act 1 Scene 5- Feste returns to Captain Olivia's service, much to her first mate, Malvolio's chagrin. Toby stumbles home drunk. Viola follows her captain's orders, but Olivia has other plans for her heart.

Act 2 Scene 1- Sebastienne thanks Antonio for saving her from a shipwreck, mourns her lost twin sister, and reveals she has been disguised as one "Roderigo". Antonio hints at a mysterious past in Illyria.

Act 2 Scene 2- Malvolio follows his captain's orders and Viola discovers that Olivia has a crush... on "Caesario".

Act 2 Scene 3- Feste, Toby, Andrew, and Maria have a party. Malvolio is a party pooper. They hatch a plot to make him look like a fool in front of Olivia.

Act 2 Scene 4- Feste sings a song that ignites an inferno of emotions between "Caesario" and Captain Orsino.

Act 2 Scene 5- Feste, Maria, Toby, and Andrew lay their trap for Malvolio, and Malvolio finds a mysterious letter.

Intermission

Act 3 Scene 1- Feste meets Viola, Toby and Andrew grow worried of "Caesario" threatening their plans, and Captain Olivia confesses her feelings.

Act 3 Scene 2- Toby and Feste hatch a plan to get Andrew and "Caesario" to fight to scare "Caesario" away.

Act 3 Scene 3- Antonio tells "Roderigo", aka Sebastienne, about the dangers of being trans or in drag in Illyria, but they decide to not let it stop them from having a good time.

Act 3 Scene 4- Malvolio acts a fool in front of Captain Olivia. Maria, Feste, and Toby play further tricks on Malvolio. Andrew delivers his letter of challenge to "Caesario". Viola and Andrew... "fight", only to be interrupted by Antonio, who protects Viola. Antonio is then caught by a transphobic guard. Antonio asks for help from his long time friend, but Viola has never met this man before.

Act 4 Scene 1- "Roderigo" meets Toby, Maria, and Andrew, who all want to fight him for some reason. That is, until Olivia steps in. Sebastienne may or may not have a crush.

Act 4 Scene 2- Feste, Maria, and Toby prank Malvolio with Feste as "Sir Topas, the Parson", but eventually she relents and helps him out.

Act 4 Scene 3- Sebastienne and Captain Olivia decide to move in together and get a cat.

Act 5 Scene 1- Time untangles the knot that is too hard for us to untie. Everything that is mended is but patched, Virtue that transgresses is but patched with sin. Sin that amends is but patched with virtue. Or What You Will.

MEET THE CAST & CREW



Fable Wilde Day (Directress/Props, Hair, and Makeup Designer)- Fable Wilde is so excited to begin her directing career in the Asheville community with this production! They have previously directed *Angels in America*, *HOWL: Melusine in Portrait*, *WASP*, and *Almost Maine*; all at UNC-Asheville. In addition to directing, Fable Wilde loves to act, stage manage, and costume design. She is the new costume shop manager at Asheville Community Theatre. You may have seen her last year as Beatrice in Montford's production of *Much Ado About Nothing*, and will be costume designing for *Tempest* later this season. She is so thankful for this wonderful cast and crew for this incredible queer adventure. This has been greater than everything she could have dreamed. Thanks. Thanks. And ever thanks.



Naimah (Nemo) Coleman (Stage Manager) - Naimah (They/She) is excited for their first MPP stage managing experience for *Twelfth Night*! While this is Naimah's first mainstage production at Montford, they've been familiar with the area for a while, as an audience member and previously assisting with Montford Moppets youth productions. It's very rare that Naimah is seen backstage. You can usually find them onstage themselves as an actor, vocalist, or dancer. It's been fun for them taking a break from the stage and seeing things from the other side. They're most locally known for their work at Asheville Community Theatre as a performer & teacher. You might recognize them from recent appearances in ACT's *Transitions* (Kah/Therapist), *Elf* (Charlotte Dennon), and *Bright Star* (Florence/Storyteller). Naimah is honored to work with such an incredibly talented cast and cannot wait to share this amazing story with the audience. Let's all sail away, through the adventurous waters of this beautiful rendition of Shakespeare's *Twelfth Night*. They would like to give a special thanks to the director and dearest friend, Fable Wilde Day for all of their

hard work and dedication!



Ida Bostian (Costume Designer)- Ida is pleased to be working with Montford Park Players for the very first time! She is a costume designer based out of Black Mountain, North Carolina. Ida has worked with many theatres in the area during her long time in the area including Asheville Community Theatre, Parkway Playhouse, the Warehouse Theatre and GLOW. She is especially fond of designing for Historical theatre and pieces that have a strong message. This was a wonderful fit for Ida and she had a wonderful time getting to know the Montford Park Players.



Casey Clennon (Sound Designer) - Casey is so excited to be working with Montford Park Players again after six years! Which, coincidentally, was her first professional de-

sign job. In those six years since her first show with Montford, she's kept busy designing shows throughout the community. Some highlights include *Metamorphoses* with Theatre UNC-A, *Nothing's Happening: A Black Mountain College Project* with Theatre UNC-A in conjunction with the SITI Company for the 2019 Edinburgh Fringe Festival, *Great Falls* and *Birds of North America* with Mockingbird Productions, *Fight Girl Battle World*, and, most recently, *Bright Star* with Asheville Community Theatre. As a long-time friend of Fable, she was honored to be asked to join this incredibly talented team of creatives, and could not be more thrilled to bring this rendition of *Twelfth Night* to life.



Gabrielle Tee (Music Director) Is making her Montford Park Players debut! She loves directing and accompanying theater, most recently in UNC-A's production of *Little Shop of Horrors*. She is also a composer with multiple albums to her name, and works as the pianist/composer for Silent Sundays at the Grail Moviehouse. Outside of performing and composing, you'll find her at the piano bench of her thriving home piano studio, teaching students from ages 8 to 80.

Take your giving further.

CFWNC supports effective giving through grants, collaborations with funders, and deep partnerships with donors and nonprofits.

Generosity multiplied.

www.cfwnc.org



Photo by Travis Bordley

MEET THE CAST & CREW

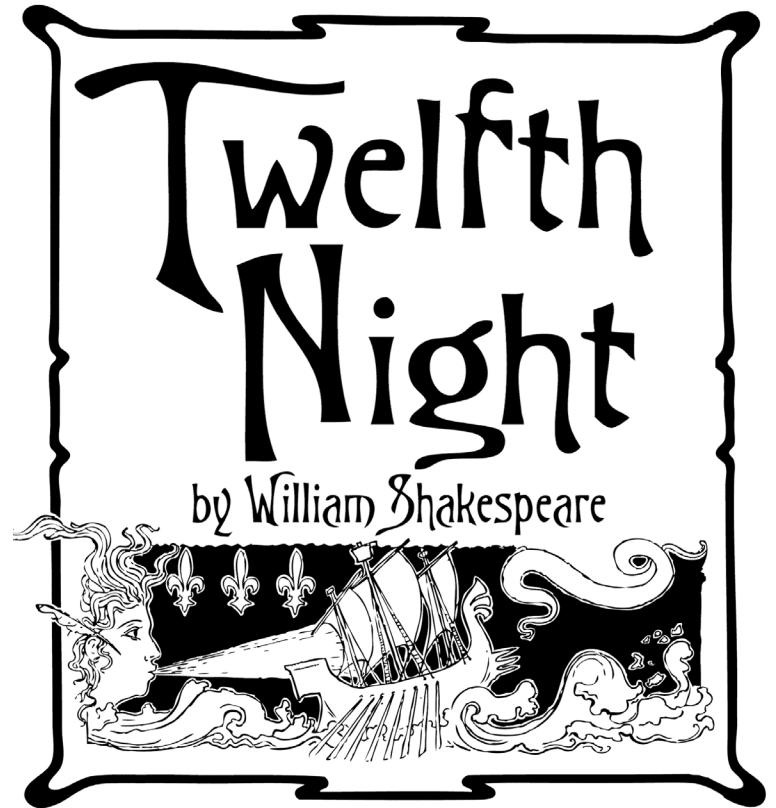


Katy Hudson (Lighting Designer)- Katy is a lighting designer and meteorologist, who is giddy to finally combine those degrees by making their outdoor design debut with Montford Park Players. They started designing with light for UNC-Asheville's *Qtopia* (2015), then went on to work with Different Strokes! Performing Arts Collective and Asheville Community Theatre before becoming the go-to stagehand for Asheville's many great stand-up comedy shows. Katy can only sail the ship of theatre through the seas of your collective imagination with the work of their trusty crew, so they owe a lot of thanks to Assistant Lighting Designers Ean Moran and Maddie Anderson.

theatre for 30 years as a dance choreographer, director, actor. Locally, she is the Resident Dance Choreographer and Social Media Manager for Montford Park Players, the Director of Movement for Different Strokes! Performing Arts Collective, and the Director of First Stage Youth Theatre. Kristi has taught dance at Warren Wilson College and Terpsicorps Academy of Dance. She is also an Artistic Associate of the Sublime Theatre and a company member of the Cardboard Sea. Up next is choreography for ACT's *Batboy The Musical*, MPP's *Treasure Island*, and *The Tempest*.



Kristi DeVille (Choreographer)
- Kristi has been working in



PurpleCat.net
web hosting

**Locally Grown.
Carbon Neutral.
Gigabit Powered.**

**Keep Your Hosting
Dollars Close to
Home Sweet Home.**



www.PurpleCat.net



828.210.1697 | info@TheMattAndMollyTeam.com



Local Real Estate Experts
and proud supporters of



ASHEVILLE COMMUNITY THEATRE PRESENTS
THE FANG-TASTIC ROCK MUSICAL

BATBOY

THE MUSICAL

JULY 21-AUGUST 6, 2023
ASHEVILLETHEATRE.ORG - (828) 254-1320

IN A NEW
PARKWAY PLAYHOUSE
space. (Finally) online.

Presented by Parkway Playhouse

SOUTHERN-FRIED SIXTIES

Four comedies set in the South or the 1960's

THE STAR
SPANGLED
GIRL



JUNE 30 - JULY 9, 2023

YOU'RE A
GOOD MAN
CHARLIE
BROWN



AUG. 4 - AUG. 13, 2023

BLACK
COMEDY



AUG. 25 - SEPT. 3, 2023

APPALACHIAN
PLAYWRITING
FESTIVAL



SEPT. 8 - SEPT. 10, 2023

202 Green Mountain Drive Burnsville, NC 28714
WWW.PARKWAYPLAYHOUSE.COM
828-682-4285

ATTORNEY AT LAW

CAROL GOINS



Divorce, Custody, Adoption
Child Support, Juvenile Law
Landlord/Tenant, Traffic Offenses,
Immigration Petitions, DACA
Renewals

email: attycgoins@aol.com

One Oak Plaza, Ste. 207
Asheville, North Carolina 28801
828-252-2273 FAX: 828-785-1455
Interpreter: Ana Fonseca 828-242-3449

SHAKESPEARE
IN THE PARK



TWELFTH NIGHT

Bob Boeberitz Design
is a proud sponsor of
the 51st season of North
Carolina's longest running
Shakespeare festival.
When the hat is passed,
please give generously.
Thanks for your support.

Bob Boeberitz Design
Your Resource For All
Sorts of Creative Stuff
247 Charlotte Street
Asheville, NC 28801
[bboeberitz@
gmail.com](mailto:bboeberitz@gmail.com)

BOEBERITZ
DESIGN

At Atlantic Bay, You're the Star of the Show!

**Every family deserves a happy ending:
financing the home of their dreams!**

Leave the tragedies for the stage!
Work with me and my supporting cast of
mortgage professionals for a tailor-made
lending experience from Act 1 to the final bow.
You'll want to give a standing ovation!

REACH OUT TODAY!



Information deemed reliable but not guaranteed. All loans subject to income verification, credit approval and property appraisal. Not a commitment to lend. Atlantic Bay Mortgage Group, L.L.C. NMLS #72043 (nmlsconsumeraccess.org) is an Equal Opportunity Lender. Located at 600 Lynnhaven Parkway Suite 100 Virginia Beach, VA 23452.

Cody Fox

Senior Mortgage Banker

NMLS #1120052, Licensed in NC, TN, FL

828-380-9756

codyfox@atlanticbay.com

www.CodyFoxMortgage.com



Gay Pirates-Finale (2.)

Cosmo Jarvis

Band intro- recorder on melody

1

G

5

G G Bm Em

Yo Ho, Se - bas - tien Let's go sail a way

9

Bm D7 G

some where where his lord ship won't be ma - - ad

13

G G Bm Em

Yo Ho Se - bas - tien I wan - na love you good and

17

Bm D7 G

We de - serve much bett - er than we've ha - - ad - - -

DIRECTOR NOTE

Dearest reader,

I write you from the belly of a ship much larger than I ever had pictured in my mind before boarding. It fascinates me how these adventures we begin take a life of their own and grow exponentially under the loving care of a crew of pirates. I will not lie to you, dear reader. There are storms outside. Just this year alone over five hundred laws were drafted to criminalize trans folks' very existence. These winds buffet huge waves against the hull of our ship, and the night feels dark.

Twelfth Night as a script is dark and sad. It is a tragedy... until it is not. I have seen plenty of productions that focus on the gloom and loss of this play. It is a narrative foil to Hamlet after all.

Yet this crew has brought so much joy and life into this script. They have brought light into my life and onto the stage. Through them, I know this ship can withstand many a storm.

I am a lover of historical romance, dear reader, and yet I have never once seen or read a romance featuring people like myself. History is not lacking in trans figures: Eleanor Rykener, Mark Reed, Mary Jones, Thomas/ine Hall, Anne Bonny, Alonzo Diaz, and so many more; yet trans and queer people are so rarely seen as romantic leads. My original goal for Twelfth Night was to create a queer period romance set to the tune of the Golden Age of Piracy. We have surpassed this goal many times over.

With this cast, we were able to rewrite each character to reflect the identity of the actor, and were able to infuse queerness into the very bones of this script; marinated into every action the characters choose to take. This is not a mythical world without transphobia and homophobia, but rather a reflection of the real choices queer folks have had to make for hundreds of years, and how piracy became home for many folks who could not live in proper society.

Pirate codes were written by the crew, captains were chosen by the crew, and with the marriage equivalent of Mateolage, piracy became a haven for folks who wanted a say in how their life was run. The danger of the high seas was still preferable to proper society for some people. I hope to honor their lives in both the product we created and the process in which we made it.

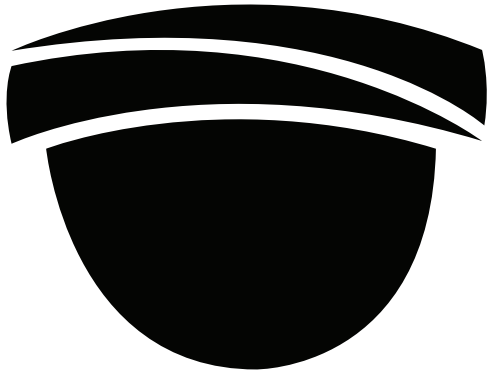
Most of all dear reader, I hope you have fun. I hope you laugh, sing, clap, and have an adventure of your own! My sincerest wish is that for two hours, you are transported and given oasis from the society we live in. I hope that you are aglow with polyamorous compersion, trans joy, sapphic romance, drag personas, and puckish pirate pranks. For two hours may you not be affected by the storms that rock our boat.

I would like to thank Rachel Gordon for her expert assistance with costume construction, Asheville Community Theatre for lending us a rehearsal space, and every single person on this cast and crew. You have all crafted this story into something grander than I could have hoped and deeper than anyone expected. I love you more than words can wield the matter, dearer than eyesight, space, or liberty.

Thank you for reading my green and yellow melancholy, you doth sway my life,

Most fortunate, most happy,

Fable Wilde Day



SCW

SECURITY CAMERA WAREHOUSE

top of the line surveillance that won't hurt your bottom line



866-414-2553 • www.security-camera-warehouse.com

HD quality • free US support
so easy to install you can do it yourself



SCW is happy to support the Montford Park Players, including our very own, Stuart Moore.

Contact Stu for 12% off your system or stop by our showroom at *6 Celtic Drive Suite A6, Arden, North Carolina, 28704.*

stu@security-camera-warehouse.com

866-414-2553 extension 113

BRAVO TO OUR DONORS

MAJOR FUNDERS

North Carolina Arts Council
ArtsAVL (Asheville Area Arts Council)

CORPORATE SPONSORS

Atlantic Bay Mortgage Group – Cody Fox
The Matt & Molly Team
Luscious Liquor Ice Cream
Carol Goins, Attorney-at-Law
Community Foundation of Western North Carolina
The Frugal Frammer
Little Jumbo Bar
Givens Gerber Park
The Madness

FIRST FOLIO CIRCLE (\$5,000 - \$9,999)

Elaine & Stephen Klesius
Henry LaBrun
Tod & Jessica Leaven

SHAKESPEARE SOCIETY (\$1,000 - \$4,999)

A-Z Family Foundation
Karen & Scott Dedman
Chris & Kelly Dunbar
Laura Robbins and Stan Ingber
Barbara Cassat Keleher & Michael Francis Keleher Endowment Fund
Virginia Luttrell
Anna & Nathan Flax Foundation
William W. MacKay
Honor Moor & John Menkes
Susan H. Murray
David Mycoff & Mei Mah
Catherine & Wallace Shealy
Matthew & Jewel Tavener
Mieko & Jim Thomson
Charles & Winslow Umberger
James Vaughn & Kevin Broadwater
Gregory & Marjorie Zack

PRODUCER'S CIRCLE (\$500 - \$999)

Nancy Baker
Lois S. Carlson & Jerome Mrowca
Julyan Davis
Thomas & Cynthia Donahue
Ron & Nancy Edgerton
Michael & Ava Fisher
Heather Goldstein
Bonnie & Benjamin Hamrick
Hersk Family Fund
Lynn Hull
Veronica & Jack Hunter
Brian May
Alexandra & Terry McPherson

DIRECTOR'S GUILD (\$250 – \$499)

Kathleen Ayres
Bob and Margy Ayres
Rebecca Banner
Andrea Blankinship Family
Eloise Bradham
Jessica Frantz
Dana Gillihan and Chris Repass
Albert & Betty Gumpert
Scott Hart
Peter & Bebe Landis
Dr. Barbara Levin
Denise Lockett and David Honea
Maria Lourdes Solares
Sally Pete
Marjorie Portwood & Geoffrey Belet
Gregory R-Gassler
David Russell
Frank Salvo and Dr. Ralph Coffey
Leigh Schwietz and Matthew F. Yetter
Dr. Robin Smith
Dr. & Mrs. Kenneth Tannenbaum
Jason Williams

PATRON (\$100 - \$249)

HCA Foundation
John Baldwin
Camille Bonnin
Stephen Boyer and Ruth Planey
Devin Brady
Thomas Brettingen
Edward Breunig
Ann and Clive Broadbent
David Broshar
Octavia Caldwell
Scott Cameron
Lauren Carlisle
Bill Chameides
Jennifer Childers
Michael Cleveland and Maria-Grazia Nunzi
Gail Curtis and Lawrence J. Fine
Brian Davis
Jeff & Jan Dektor
Pam Dixon
Tommy Eller and Sarah Anne Eller
Chris and Bonnie Gilbert
Blaine & Cynthia Greenfield
Anna Hamrick and Sam Snead
M Hart Giving Fund
Patricia & Tom Hearron
Donald Higley
Jennifer Jones
Kathleen Kelly
Margaret Kelso
Beate Langsdorf
Angela Lavezzo
Edgar Lockett
Susan Mackintosh

Vic & Laverne Marshall
Anna & Langdon Martin
Kimberly Mason
Margaret Miles
Peter Millis
William Mitchell
David & Ellen Nutter
Paula O'Brien and Andrew Opalka
John O'Neill
Monica Peltz
Steven Pennington
Barbara Phelan and Carol Reed
Judy & Ray Polinko
Eleanor Powers & John Skogman
Lauren Powers
Rebecca Powers
Melanie Prater
Ursula Radabaugh
Stephen Riedesel
Andrew Runkle
Dr. Annemarie Russell
Daniel Sandoval
Hermann Schaller
Neil Scheurich
Eileen Searcy
Karen Shults
Cheryl Small & Doug Anderson
Dana Smith
Ashleigh Stephens
Lee Stockdale
Dorothy Sulock
Shelia Nichole Sumpter
Candace Taylor
Eric Taylor
Ernie Thurston
Anne Toschi
Courtland White
Mary & Tina White
Michael Wilhelm
Scott Wilkins
John & Beth Woodson
Harry E. Young Jr
Zach Zarnow

LEADING ROLE (UP TO \$99)

James Abbott
Roukiatou Aboubacar
Jen Ahern
Cheryl Ainslie
Michael Akers
Natasha Albornoz
Susan Alexander
Tim Alford
David Allegretti
Miriam Allen
Alexa Allen
Joanne Allison
Ferrell Alman
Graham Altamura

Charleen Alviano
Suzann Anderson
Myles Anderson
Jen Andrews
Anonymous
Peteris Anuzis
Annamarie Arens
Michael Arlington
Jaime Arnett
Beckett Arnold
Kathleen Askier
Amy Auten Tucker
Elisabeth Avnet
Rhonda Bachman
Anne Bagnol
James Baker
Andy Ball
Melanie Ballard
Duane Barnes
Donald Barrier
Barbara Bartell-Kamp
Debi Bartholomew
Patricia & Glenn Bass
Brandy Baudrand
Jay Bauer
Alice Bauman
Jennifer Bayer
Jessica Bayne
Tama Beardsley
Jill Becker
Monica Beebe
Robyn Bellis
Jon Bellows
Garrett Bender
Christy Bennett
Megan Bennett
Lisa Bennett
Bethany Berghoff
Cristopher Bettis
Katie Biddle
Brittany Bierman
Martha & Julian Biller
Xandria Birk
Katie Black
Janet Blake
Sarah Blanchard
Olin Blankenship
Doug Blecher
Steven Blevins
Heather Boersma
Tarra Boggs
Chris Boland
April Bolet
Richard Booth
Erin Braasch
Joy Bracewell
Jeffrey Bradley
Susan Bradt
Joyce Brassfield

BRAVO TO OUR DONORS

Jessica Braun-Ferris
James Brinkmann
Steve Brookner
Sharon Broussard
Laura Brower
Nicholas Brown
George Brown
Thomas Brown
Ronald Brown
Chris Brunton
Jeff Buboltz
James Buie
Robert Bullock
Angela Burden
Audra Burtch
Elizabeth Buzogany
Luke Cannon
Tiffany Cannoncro
Jacob Canter
Tracy Carder
Jillian Carey
Margaret Carlin
Ricardo Carrasco
Lisa Carroll
Havely Carsky
Harlan & Aiden Carson
Frieda Carson
Chloe Carter
Irene Castellano
Joshua Cauto
Bill Cavallaro
Helen Chandler
Jerry Chasen
Yesmira Chia
Lisa Chickos
Jane Christen
Kelly Christopher
Austin Church
McKinley Clabaugh
Mrs. Laura S. Clark-Jones
Mary Helen Cline
Julie Cochrane
Emily Coey
Kristi Coker
Olivia Cole
Addison Collins
Shari Comeau
Mark Conti
Ellen Cook
Nicole Cordeiro
Elsie Cortes
Tracey Costanzo
Betsy Couzins
BlackThumb
Janet Cox
Carol Lee Craig
Rebecca Crandall
Mary Payricia Crawford
Michael Creech

Shaun Creighton
Darien Crossley
Grace Cunningham
Mollie Curry
Alyssia Cursi
Christopher Cyr
Marc Czarnecki
Charles Dahl
Dan Damerville
Cara DancyJones
Jessica Danielian
John Dartez
Gautam Das
C Davenport
Pamela Davis
Courtney Davis-Shoemaker
David Dawson
Foster de la Houssaye
John DeGelleke
Maria Deiters
James Desotelle
Alex Deutsch
Laurie deVegter
Anne Dilgen
Grishma Dille
Vijay Director
Jackie Dobrinska
Heidi Domeisen
Brian Dominy
Becky Donald
Todd Donatelli
Amie Dorsey
Pamela Doubek
Scott Douglas
Catherine Douglass
Daniel Drake
Joanna Drechsel
Melissa Drennan
Christopher Dunbar
Dean Duncan
JOSEPH DUNGAN
Steve Dunlop
James Dunn
Katherine Dunn
Nathaniel Dupont
Shirley Durham
Mary Durham
Mitch Earle
Abigail Earley
Gene & Barbara Earnhardt
Donna Eby
Michele Ecker
Elizabeth Eckl
Jonathan Edwards
Samantha Edwards
Alex Eichstadt
Peter Eisemann
Edith Emerson
Katy Emmert

Lisa England
Karen Eske
Fontaine Evaldo
Eric Everett
Dagmar Fahr
Jennifer Farthing
Ben Fehsenfeld
Lynn Feldman
Morgan Fender
Carmen Fenwick
Mary Fields
Pina Finazzo
Kevin Finley
Nicholas Fischer
Donald Fish
Heather Fitch
Suzanne Fitzgerald
Charlotte Fitzpatrick
Alice Fleischman
Deborah Fleming
Douglas Flemons
Alexandra Fletcher
Caitlin Floyd
Kara Fohner
Don Ford
Susan Foreman
Sandra Fournies
Juliet Francis
Sarah Franklin
Sandee Fricks
Mary Friedline
Abbey Friedman
Janie Friedman
Ken Frohling
Kylee Frye
Lindsay Furst
Kimberly Gabellini
Ryan Gagliardi
Arthur J. Gallagher
David Gallante
Ann Gardiner
Brianna B Gardner
Jennifer Garner
Joyce Gersky
Joshua S. Gettinger
Lee Gibson
Lola Gifford
Laura Gift
Karen Giglio
Paige Gilchrist
Mary Gillespie
Catherine Gillet
Allen Gilpin
Phyllis Gloeckler
Bret Golab
Forever Studios
William Golson
Adriana Goodnight
Susannah Gopalan

Jeff Gottesman
Marie Gouldsbury
Kristie Grainger
Sarah Gransee
Nichole Graves
Nicole Greene
Steven Gregory
Tuuli Gress
Robert & Gloria Griffin
Lauren Griffin
Lindsey Grossman
Evan Grote
Margaret D Groves
Elizabeth Guerriero
Allison Hackman
Laurie Hagstrom
Brooks Hall
Amanda Hall and Robert Zeid
Christa Hamilton
Kendra Hamm
Miranda Hanna
Jonathan Hanson
Caroline Hardin
Susan Harding
Thomas Harkins
Deren Harper
Wesley Harris
James Harrison
Melissa Harwood
Richard Hawkins
Steven Head
Elsie Hedgspeth
Zac Hegwood
James Heinel
Dewitt Helgemo
Roger Helm
Morgan Hembree
Meredith Hendrix
Steven Heulett
Daniel Hey
Lisa Hicks
Brian Hildenbrand
Kimberly Hill
Lori Hilliard
William Hockett
Joan E Hodges
Timothy Holcomb
Margaret Holcombe
Elizabeth Holden
Paul Holland
Jessica Holleman
Indalita Holt
Christa Holtz
Jennifer Hoolihan
Melissa Houck
Susan Housand
Julia Hudgins
Kesa Huey
Christa Huff

BRAVO TO OUR DONORS

Brendan Hughes
John Hurd
David Hyton
Steve Ianniello
Lillian Imbelli
Jacob Ingerson
Fred Ireland
Jordan Israel
John J Templin
Katee James
Jordan Janes
Stephen Jelfs
Jillian Jenkins Mangin
William & Laurel Jernigan
Rebecca Johnson
Martha Johnson
Gabriel Johnson
Jillian Johnson
Anne Johnston
Lori Johnston
William Jonas
Kristi Jones
Christopher Jones
Andrew Jones
Priscilla Jordan
Robert Jordan
Beth Juliar
Beth Kacvinsky
Carol Kaminski
Sylvia Kauffman
Charles Keating
Amber Keeran
Travis Kelley
Kathy Kelley
Joslyn Kelly
Courtney Kelly
Ryan Kelly
Tiana Kennell
Ruth Kent
Michael Ketover
Anna Khalo
Patricia Kirby
Andrew Kirkland
Lise Kloepfel
Karen Koenig
Bruce & Anna Koloseike
Sherrie Koone
Vicki Koons
Kari Koty
MaryEtte Kramer
Jennie Kratz
Susan Krokosz
Heather Krueger
Peter Kruse
Aimee Kuelling
Julia Kuhl
Ann Kurtis
Denise Lackamp
Victoria Lamberti

Irv Lamel
David Lamoree
Jeremy Landrum
Jane Landwehr
Kaylin Lang
Stephen Lapointe
David Larry
Karen Lasker
Aldo Lastra
Steven Lazarus
Alicia Lee
Kristen Lee
Brian Leonard
Anne Leonard
James Letts
Jay Leutze
Susan Levenson
Laura Lever
Genevieve Levine
Amanda Light
Michael Lind
Erynne Liniker
Catherine Lione
Elyse Littenberg
Maria Livingston
Neal Lloyd
William Lopez
Catherine Lorimier
Frank Lothschuetz
Stephanie Lovell
Deborah Lowry
Matthew Lutz
Elizabeth Lynch
Scott Lyons
Glen Machonis
Jacob Mack
Daniel Macken
Ronda Mackey
Olin Macnamara
Gillian Madsen
Chloe Maginity
Leslie Malnasi
Kristina Maloney
Emma Mankin-Morris
Lisa Mann
Katherine Manser
Lois Markham
Barbara Markley
Fred Martin
Pamela Martin
Dena Martin
Chris Martin
Melissa Martinez
Jeffrey Mason
Carolyn Mason
Harold W Mason
Brian Mayer
Diane Mayes
David Mayfield

Max Mays
Don McAdam
Bret McAllister
Bill McClain
Sherri McConnell
Brooke McConnell
Gary Mccracken
Megan McElveen
Lisa McKinney
Hannah McLeod
Lori McLeod
Isabella McMillion
Lynne Meacham
Eliza Meadows
Alexis Meldrum
Jeanette Meleen
Tamra Mendoza
Xanthi Merlo
Allison Merrell
Karly Michel
Joseline Mielke
Julie Miller
Lauren Milling
Hannaneh Mirmozaffari
Kristi Mizen
Christie Moldovan
Steven Molinari
Betty J. Moore
Marc Moore
Clarice Moran
Louis Moritz
Cherie Morris and Randy Omark
Rochelle Mozlin
The Muir-Ray Family
John & Susan Mycroft
Kendra Nehrenz
Brian Newport
Jeffrey Nichols
Noel Nickle
Richard Nock
Cina Noel
Alesia Norfleet
Christopher Norrington
Mark Norwood
Julia Novikova
Andrew Nugent-Head
Laurie Percival Oates
Jacob O'Brien
John Oconnell
Ailish OConnor
Linda Oelschlaeger
Ana Ogle
Meredith Oliveti
Silvia Olvera
Cade Osborne
Greg Owen
David Paavola
Donna Page
Amanda Painter

Angela Parker
Katherine Patrick
George Patrick
Scott Patrick
Lisa Payne
Louly Konz
Sofia Pearson
Elizabeth Permenter
Rachel Perry
Karen Peschel
Nancy Peterson
Elizabeth Peterson
Kay Phillips
Matthew Phillips
Rebecca Phillips
Kelly Phillips
Kyle Pifer
Olivia Pistor
Tiffany Pitre
Sharon Pitts
Victor Plump
Craig Plunkard
Margaret Poist
Liliana Pond
Lori Ponder
Gary Porter
Serena Potter
Lillie Potts
Helen Powell-Busch
Margaret Prado
Erik Pratt
Krista Preissler
Peter Price
Kathryn Price
John Prigge
Holland Pritchett
Amanda Pruitt
Mohammad Qambar
Xuewei Qian
Lisa Raleigh
James Ramage
Noah Ranells
Sonomi Ranucci
Tina Rappaport
Zachary Ratkovich
Carson Ray
Amy Read
Rochelle Ready
Gottfried Reck
Helen Reece
Svijetlana Repic
Beth Rhyne
Jamie Ricalde
Stephanie Rice
Jennifer Rish
Lisa Rist
Ashley Ritch
Wilhelm Ritter
Marta Robau

BRAVO TO OUR DONORS

Matthew Roberts
P Candace Robins
Susan Robinson
Lee Roddick-Brown
Sydney Rodich
Steven Roehner
Kay Rogus
Eve Roha
Lisa Rohr
Michael Romanello
Damien Roos
Takira Rose
Tracy Rosenthal-Newsom
Edward Rothberg
Victoria Rothenhoefer
Kris Rowan
Doug Roy
Mary Rugh
Anthony Russel
John Russell III
Douglas Russell
Deloras Russo
Hanina Ruttenberg
Pat Ruzic
Patricia Ryan
Ken Ryumae
Nathalie S Santos
Ripley Sager
MArtha Salisbury
Ari Salkin
Melissa Sanderson
Ligia Sandor
Kate Savkovich
Marte Schaffmeyer
Carlann & David Scherping
Jacqueline Schieb
Stanley A Schmidt
Jennifer Schoolfield
Robin Schuh
Alexander Schwartz
Lillah Schwartz
Miriam Scott
R Stephen Sedgwick

Karen Seggerman
Akriti Sehwat
JEFFREY SELF
Valerie Semer
Charlotte Shackelford
Susan Shah
LEA SHAH
Rachel Shapiro
James Shaw
Andrew Shearer
Katelyn Shiring
Sarah Shirley
Samantha Shofar
Susan M. Shope
William Shuford
Matt Shumate
Pattie Sibbett
Susanne Sichta
Beth Silverman
Janet Silvers and Teri Tebel-
man
Darryl Silwedel
Michele Simmons
Meredith Simpson
David Skinner
Robert Slavkin
Katie Slinner
Harriet C. Smith & Robert
Hastings
Christin Smith
Blair Smith
Ella Smith
Daniel Smith
Mary Smith
Ashley Smith
Mary Smith
Heather Smith
Jody Smith
Kylie Meyer Snyder
Carole Somsy
Paul Soutter
Gretta Sowyrda
Carolyn Spaulding

Lindsey Sprague
Kelley Squires
Jody Stacy
Gerard Stamm
Beth Stamper
Myrtle Staples & Cecil Ben-
nett
Ryan Stedwell
Susanna Steffen
Harriet Sterling
Jackie Steward
Robert Stewart
Gina Stinson
John Stisowain
Howard Stoloff
James Storey
Steven Stovall
Tara Stratford
Daniel Stryker
Pamela Subalusky
Katherine Sullivan
Mollie Sullivan
Chelsea Sullivan
Cheryl Suydam
David Sweet
Alexandra Szablya
Nathaniel Tadlock
Max Taintor
Nicole Taris
Stephen Taylor
Dwight Taylor
Hildy Teegen
Mary Thigpen
Christopher Thomas
Courtney Tiberio
Jessica Tickle
Curve Theory
Jennilyn Tillotson
John Todd
Lorie Tola
Renzo Tomlinson
Mackenzie Tomrell
David Torre

Rebekah Travis
PayPal Giving Fund
Justine Tullos
Donald Turman
Robert Ulmer
Adam Van Hine
Kayla Van Oosterwyk
Molly Varley
Juel Vasil
Tara Vaughn
Amanda Venturella
Matthew Vest
Eric Vik
Kamini Vrable
Erika Waldorf
Kim Walker
William Walker
Eric Wall
Molly Walter
Robert Ward
Janice Warren
Susan Watson
Virginia Waymouth
Janet Webb
Tyler Webb
Chelsea Weber
Mary Wedick
Elliott Weiner
Jack Westall
Rita Weyers
Julia Wharton
Shirley J. White
Gregory White
Samantha white
Maegan White
Luscious Liquor Ice Cream
Julie Wignall
Deborah Wiley
Denise Wilfong
Sunder Willett
Dan Williams
Elizabeth Williams
Molly Williams

Mike Wilpizeski
Adam Wilson
Matt Winkleblack
craig winterfield
Thomas Wolfe
Robert Sparrel Wood
Joseph Woodbury
Johnathon Wright
Randall Wright
Ian Wyatt
Alexis Yamokoski
Ann Elizabeth Young
Jonathan Zalon
Marilyn Zapf
Lauren Zenreich
Justin Zhou
Jacob Zimmerman

..... (List complete as of June 9, 2023 If we made a mistake, please let us know.).....

Name _____ Credit Card Type _____

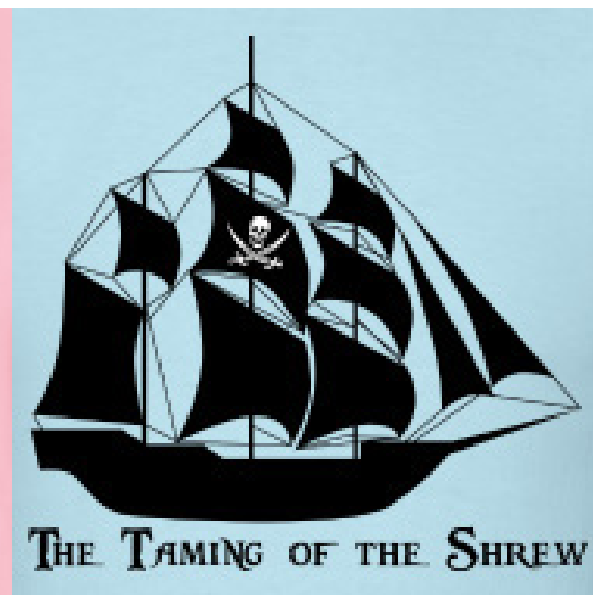
Address _____ City _____ State _____ Zip _____

Name on Card _____ Card Number _____

Telephone _____ Expiration Date _____

E-mail Address _____ Signature _____

MPP MERCH



Please visit our Spreadshirt shop <http://shop.spreadshirt.com/montfordpark> for these and other great items!



Men's T-Shirt



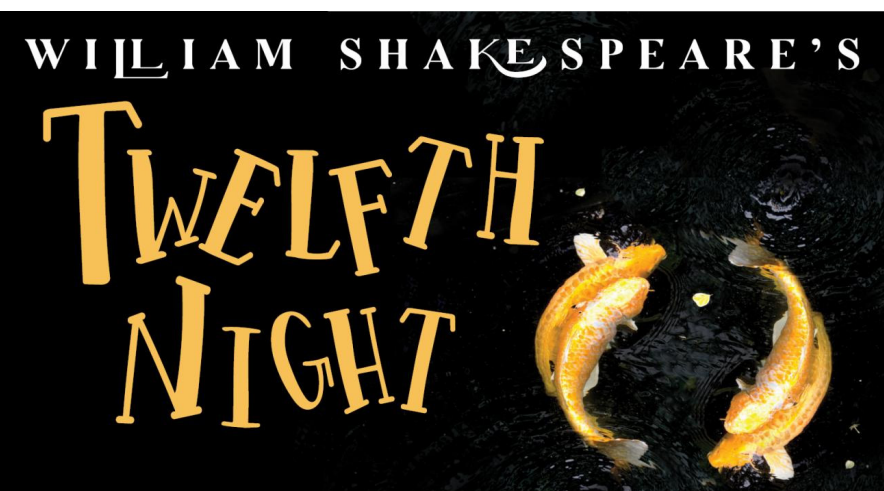
Baby T-Romper



Baby T-Romper



Women's Premium T-Shirt



vsocostumes@yahoo.com

828-545-8092

MPP MERCH



Women's V-Neck T-Shirt



Travel Mug



Women's T-Shirt



Men's Raglan Crewneck
Sweatshirt



Men's T-Shirt



Women's T-Shirt



Baby T-Romper



Toddler T-Shirt



Tote Bag



Tote Bag



Women's Hooded Sweatshirt



Womens Wideneck Sweatshirt

FRAMER

FRUGAL

**Your Art.
Our Passion.**

Downtown AVL / Montford
95 Cherry St. North
(828) 258-2435

South Asheville
200 Julian Shoals Dr. Ste. 20
(828) 687-8533

frugalframer.com



Yes! I want to know about upcoming Montford Park Players events!

NAME: _____

ADDRESS: _____

CITY, STATE, ZIP: _____

TELEPHONE: _____

EMAIL: _____

How did you hear about us? (Check as many as apply)

Citizen-Times: Calendar Item Advertisement Take 5

Mountain Xpress: Calendar Item Advertisement

Daily Planet: Calendar Item Advertisement

The Laurel: Calendar Item Advertisement

Other _____

Radio: WCQS 98.1 The River

880 Local Edge Radio

Other _____

Website:

montfordparkplayers.org (Montford Park Players)

visitnc.com (our state tourism website)

exploreasheville.com

livewireasheville.com

mountainxpress.com

Other _____

Brochure: Received in mail

Picked up at _____

MONTFORD PARK PLAYERS

BOARD OF DIRECTORS

Class of 2022

Stan Ingber 1st Term

Class of 2023

Jessica Frantz, Chair 3rd Term
Charles Umberger, Treasurer 2nd Term
Candace Taylor 1st Term
Kris Hernandez 1st Term
Spike Thompson 1st Term

Class of 2024

Honor Moor 1st Term
Tod Leaven 1st Term
Frank Salvo, Vice Chair 1st Term

Youth Representative Class of 2020

Eli Hamilton 1st Term

Principal Advisor

John Russell, Executive Director

STAFF

John Russell, Executive Director

Deanna Braine Smith, Production Manager & Resident Fight Choreographer

Caitlin Lane, Production Stage Manager

Trinity Smith Keel, Head of Costumes

Devyn Ray, Equity, Diversity & Intimacy Coordinator

Jeff Catanese, Marketing Director

Kristi DeVille, Social Media Coordinator and Resident Dance Choreographer

Rodney Smith, Director of Photography and Playbill Designer

Walker Linkous, Facilities Director

Jason Williams, Resident Lighting Designer

Nichole Sumpter, Resident Sound Engineer

Kathleen Ayres, Resident Lighting Control Operator

2018 Community Theatre Award



**Montford Park
Players**
Asheville

Special Thanks from the Administrative Staff:

The house staff and Board of Directors of MPP
Brian Smith – for design and construction of new thrust stage
Mountain Xpress
Asheville Department of Parks and Recreation
UNC TV
Asheville Area Chamber of Commerce
Explore Asheville Convention and Visitors Bureau
Bob Boeberitz Design
Tempus Fugit Design
Our Advertisers

Special Thanks to the Platform Project Crew:

Brian, Deanna, Goober, Caitlin, Darren, Aaron, Dakota, Walker, Seth, Loren
and any others who contributed whose names we didn't get.



“...FOR IN SUCH BUSINESS ACTION IS ELOQUENCE” CORIOLANUS



Volunteer Engagement Opportunities

- ❖ Off Stage
 - Concessions & Gifts
 - Parking Attendants
 - Ushers
 - Workdays
- ❖ On Stage
 - Actresses & Actors
- ❖ Behind Stage
 - Techies
 - Assistant Stage Managers & Directors
 - Costumes
 - Lights & Sound
 - Props
 - Set Construction

ALL volunteers become **MPP MEMBERS** which means, among other activities, you get to **VOTE ON WHAT SHOWS WE PERFORM** when you attend our annual picnic.

If you're interested in joining NC's Longest Running Shakespeare Festival contact us today...

Email --- info@montfordparkplayers.org

Phone --- (828) 254-5146



“Things won are done;
joy's soul lies in the doing.”

Troilus & Cressida

92 Gay St, Asheville, NC 28801 ----- www.montfordparkplayers.org



Luscious Liquor Ice Cream Catering

Ice Cream Socials & Pool Parties

Weddings & Corporate Events

Summertime's Celebrations

Premium Quality Spirits

Hot Fudge + Whiskey

Scrumptious Flavor

Decadent Texture

Sundae Funday

Ice Cream Bar

Minds Blown

Double Dip

Luscious

Scoop It

Boozy

Wow



lusciousliquoricecream.com



Montford Park Players

@MontfordParkPlayers



venmo

LITTLE JUMBO

Want to give more \$\$ to the theatre??



Rip off this page, and bring it to LITTLE JUMBO
We will make a donation to MPP!



Montford's Neighborhood Bar

At the Corner of Broadway & Elizabeth St.

Open at 4:00 p.m. Daily

Free Parking at 5 Points Diner

