



**The Montford Park Players**  
**North Carolina's Longest Running**  
**Shakespeare Festival**

**92 Gay Street**

**PO Box 2663, Asheville NC 28802-2663**

**Tel. (828) 254-5146**

Email: [info@montfordparkplayers.org](mailto:info@montfordparkplayers.org)

<http://www.montfordparkplayers.org>

## **Notice of Membership Meeting and Picnic**

### **Membership Meeting & Picnic**

The Meeting of the membership of The Montford Park Players will be held Saturday, August 26, 2016 at the Hazel Robinson Amphitheatre, from 12:00 pm – 5:00 pm.

#### **Items on the Annual Meeting agenda include:**

1. Selecting three plays for the 2018 Summer Season;
2. Electing up to six adult members of the Board of Directors;
3. Electing one youth member (less than 18 years of age) to the Board of Directors;
4. Such other business as may come before the membership meeting.

Our bylaws define a member of The Montford Park Players, *for purposes of voting*, as anyone who has participated in any way at MPP during the past two seasons (beginning with 2016's *Private Lives* through 2017's *Complete Works of Wm. Shakespeare (Abridged)*, also including board and committee work, front of house volunteers, **AND ALSO** who is 12 years old or older). Guests and old members are always welcome, but do not have voting rights. Please sign in with the Managing Director on arrival to receive your ballot package. You will only be given one package so please do not lose it! Our Bylaws require that you be present in order to vote.

### **Picnic**

Our membership meeting and picnic is a pot-luck affair. MPP will provide hamburgers, hot dogs (regular and vegan), buns and soft drinks. Casseroles, salads, chips, melons, cakes and pies are always welcome and will be devoured by our starving actors. Lunch will begin at 12:00 pm; **the business meeting will begin at 1:00 pm.**

### **Your Board of Directors**

The board of directors of MPP is composed of up to 7 elected individuals (six adults, one youth member).

Our current board membership is as follows:

#### **Class of 2017**

Jason Williams, Chair                      2<sup>nd</sup> Term                      [jsunwilyams@mindspring.com](mailto:jsunwilyams@mindspring.com)  
(Working Group Leader, External Affairs Working Group)

Jane Hallstrom, Secretary 1<sup>st</sup> Term [jmhallstrom@gmail.com](mailto:jmhallstrom@gmail.com)  
Jessica Frantz 1<sup>st</sup> Term [jlrfrantz@gmail.com](mailto:jlrfrantz@gmail.com)  
(Working Group Leader, Governance Working Group)

### **Class of 2018**

Adam Arthur 1<sup>st</sup> Term [foghatjoe@gmail.com](mailto:foghatjoe@gmail.com)

### **Class of 2019**

Stephanie Hickling-Beckman 1<sup>st</sup> Term [mzshick@gmail.com](mailto:mzshick@gmail.com)  
Jonathan Dunlap, Attorney-at-Law 1<sup>st</sup> Term [JDunlap@vwlawfirm.com](mailto:JDunlap@vwlawfirm.com)

### **Youth Representative**

Lilly Mills 1<sup>st</sup> Term [lilly.mills@montfordparkplayers.org](mailto:lilly.mills@montfordparkplayers.org)

### **Principal Advisors**

John Russell, Managing Director [john.russell@montfordparkplayers.org](mailto:john.russell@montfordparkplayers.org)  
(828) 275-1454  
Scott Keel, Artistic Director [f.scottkeel@gmail.com](mailto:f.scottkeel@gmail.com) (828) 215-4287

The Managing Director and the Artistic Director are the principal advisors to the board and to the Executive Committee, with voice but no vote.

- Jason Williams will be finishing his 2<sup>nd</sup> term this fall, and is not eligible for re-election, under our current Bylaws.
- Jane Hallstrom has given her intention to retire from the Board upon election of a replacement.
- Lilly Mills has reached the age of majority, and will be attending college in the fall, and is no longer eligible to serve as a Youth Member.
- Jessica Frantz (Working Group Leader, Governance Working Group) will stand for an additional 3-year term.

The board and staff are currently engaged in a Strategic Planning Process, facilitated by John Curtis of Integrated Organizational Development, Inc. The purpose of this process is to position Montford Park Players for the next several years as a thriving, mature theatre company adhering to the highest standards and operating on sound financial principles. This will include a Donor-Driven, Major Gifts fundraising campaign to begin late this year, along with changes in the manner in which the Board of Directors is operated. **The Board is transitioning from a Working Board to a board comprised of strategic thinkers and experts in the field of not-for-profit operations and fundraising. We encourage nominations of those persons who are capable of fulfilling these roles.**

To that end, the Board has authorized, under its authority under the Bylaws, an expansion of adult directors from the current six to a maximum of ten. The Governance Working Group has been recruiting a stellar group of candidates and the board recommends the following persons for the Class of 2020, all of whom have qualified as Members of the Montford Park Players:

- Jessica Frantz – current member of the board, Leader of the Governance Working Group, Director of Membership and Operations at Public Radio Program Directors Association;
- Michael Fisher – marketing expert, publisher of Living the Photo Artistic Life;

- Paul Mashburn – CPA, partner, Mashburn & Burmester, P.C
- John P. Mendenhall – retired from Silicon Valley, actor;
- Charles Umberger – Executive Vice President, Entegra Bank; Co-Chair of our Awareness Event;
- Haven Volpe – Actor, candidate for Youth Member

The membership will elect up to six adults and one youth for the Class of 2020

## Selecting The 2018 Summer Season

The Artistic Director, acting under the authority of his fiduciary responsibilities to the Board of Directors and the organization, has selected a “pool” of shows for the 2018 summer season, divided into three categories:

- a) Tragedies/Histories;
- b) Comedies/Romances;
- c) Other shows, including shows we have never before performed.

After consideration of input from both members and audience members, the Artistic Director has selected the following shows to be voted on by the membership (The membership will select 1 show from each of the following categories):

- a) Tragedies/Histories:  
Hamlet, Antony & Cleopatra, Macbeth, Richard II, and King John
- b) Comedies/Romances:  
All’s Well That Ends Well, A Midsummer Night's Dream, Pericles, The Tempest, Cymbeline
- c) Other shows: 10 nominations maximum; **No plays can be nominated from the two previous lists. This does not mean we will not produce them. They just cannot be voted on in this category.**

## Managing Director's Report to the Membership

Dear friends,

I have the pleasure of telling you that 2016 was another successful year for the Montford Park Players. For the FIFTH year in a row, we ranked in THIRD place in total attendance among outdoor theatres in North Carolina, behind *The Lost Colony* and *Unto These Hills*, surpassing attendance for *Horn in the West*. Our total attendance was 9,550, and our production of *Much Ado About Nothing* recorded the highest attendance in our history, with 3,395 in attendance.

Our productions have been well received and highly-rated by audience members and critics alike! We're rated # 3 among concerts and shows in Asheville by TripAdvisor.com, with a **5.0** rating.

Our construction plans were submitted to Development Services last year for review. We have been in negotiations with them all year regarding issues that they want addressed, most of which are beyond our ability to fix, such as additional parking spaces and a small piece of land in the middle of our property that is owned by Buncombe County. This is the principal reason why construction has not yet begun although our contractor is ready to start!

**This year so far**, we've managed to accomplish some great things!

- We completed Shakespeare's Canon this year by producing *Timon of Athens*, and in so doing, became only the **14<sup>th</sup> company in the world** to have accomplished this feat.
- Our reviews have been stellar, as we continue to raise the bar on artistic quality.
- We were pleased to entertain the **First Lady of North Carolina**, Kristin Cooper, on opening night of *Taming of the Shrew*, and she was thoroughly impressed with the quality of our work.
- I'm extremely pleased with the progress of our Strategic Plan, and look forward to moving toward a Donor-

Driven Major Gifts Campaign, under the leadership of John Curtis.

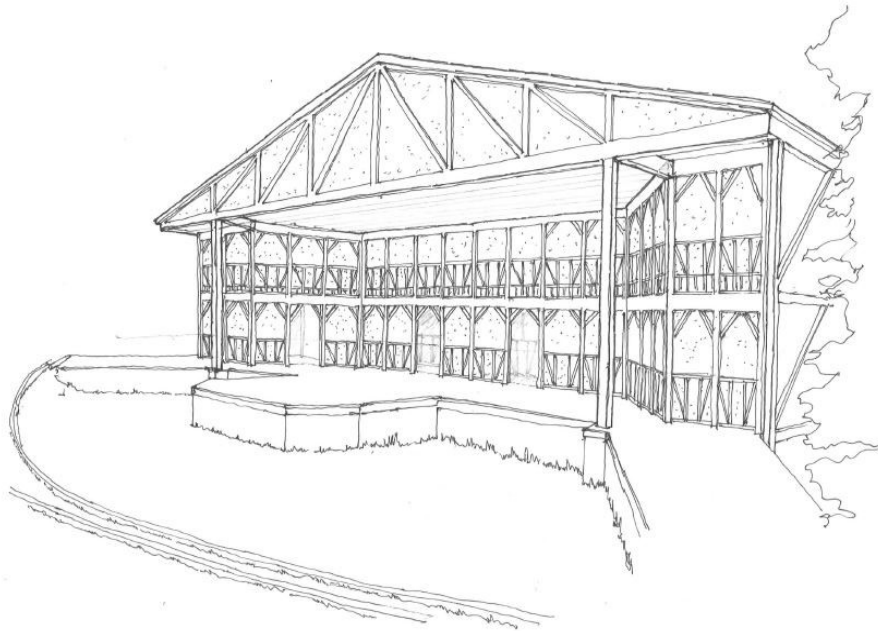
- Your Managing Director was appointed in July to the board of the North Carolina Arts Council by Gov. Roy Cooper.
- I look forward, as I know you do, to new facilities that will enhance our ability to perform Shakespeare and other playwrights, and that will enhance the comfort and enjoyment of our audience members.

In conclusion, we've had a very positive year so far. I am excited to be working with you this year and helping MPP raise the bar even higher.

Regards,

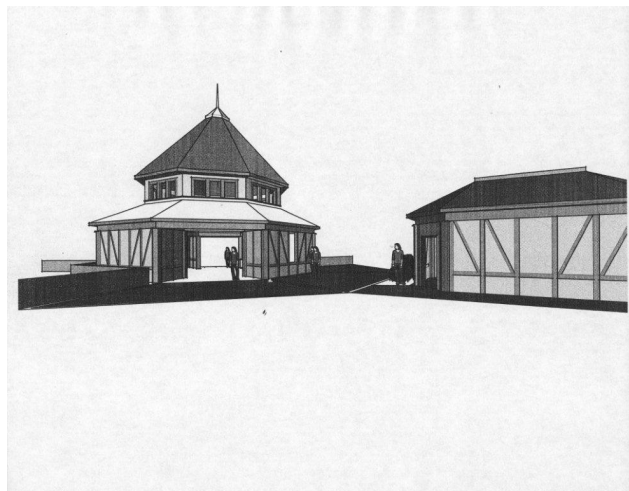
John Russell

Managing Director [john.russell@montfordparkplayers.org](mailto:john.russell@montfordparkplayers.org)



*Our New Stagehouse!*

**New Stagehouse Perspective Drawing by William Wheeler, Architect**



**New Welcome Center Perspective Drawing by William Wheeler, Architect**